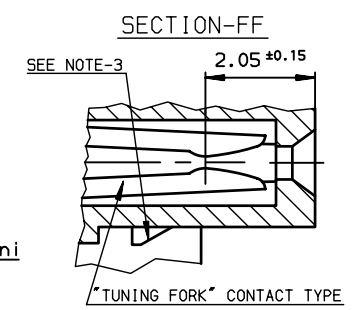
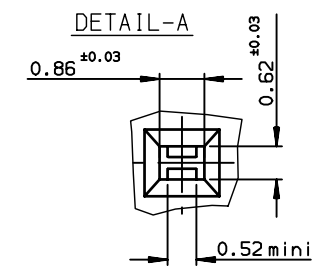
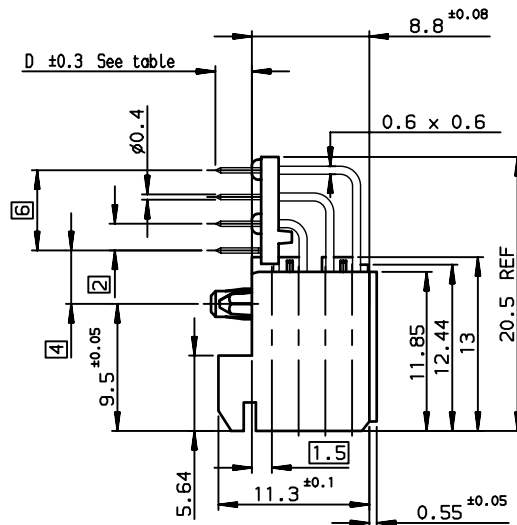
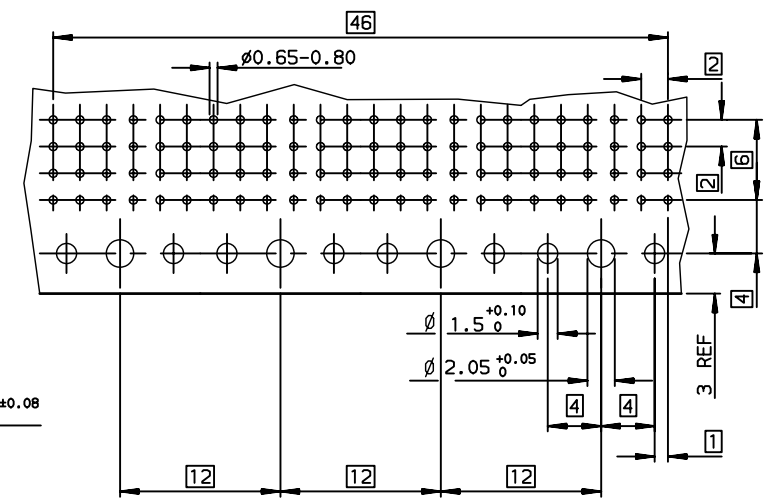
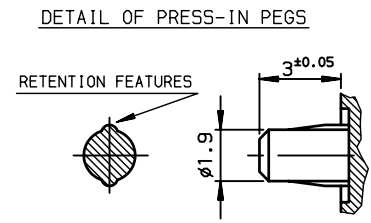
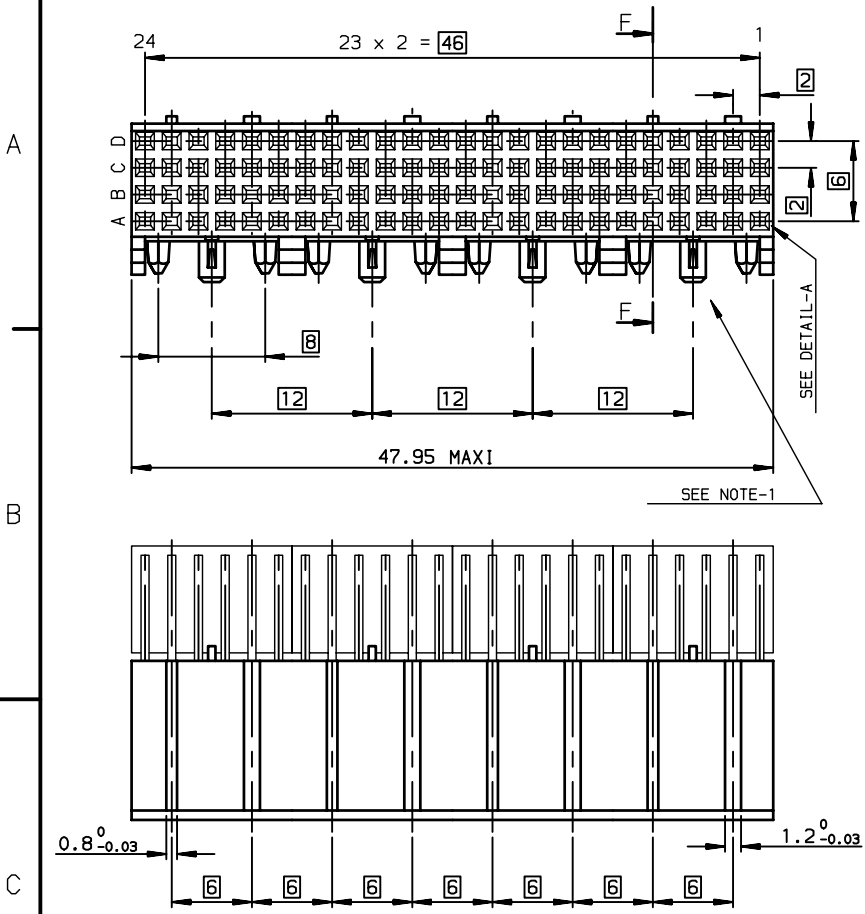


LAYOUT FOR P.C.B



TIN LEAD PART NUMBER

Part Number: HM1F43F*P400H6P

LEAD FREE PART NUMBER

Part Number: HM1F43F*P400H6PLF

GENERAL CHARACTERISTICS AND ROHS INFORMATIONS:

SEE DRAWING C-8626-0005

SPECIFIC DATAS:

- NOTE-1; PLUG FOR HOT RIVETING ASSEMBLY
- NOTE-2; MATING CONNECTORS WITH PCB 2.4 mm IN MALE CONNECTORS WIDE BODY ONLY
- NOTE-3; PLUG FOR CODING KEY FIXING

- VISUAL INSPECTION; 100%
- marking failure
- housing material failure
- spoilt housing
- stained housing
- broken contacts (twisted or loosen)

Part Number	Dim D
HM1F43FAP400H6P	2.9 ±0.3
HM1F43FAP400H6PLF	
HM1F43FBP400H6P	3.6 ±0.3
HM1F43FBP400H6PLF	

rev	ecn no	dr	date
A	-	-	-
B	LS05-001	MLE	2005/03/15
C	LS06-0020	MLE	2006/01/20
D	LS06-0025	MLE	2003/02/02
E	LS06-0097	LGO	2006/07/21
-	-	-	-
-	-	-	-

(REDUCED SCALE SHEET)

European Views

www.fciconnect.com		surface ISO 1302 ✓	tolerance std ISO 406 ISO 1101	projection	mm
Dr CHAMPION 2002/11/19		TOLERANCES UNLESS OTHERWISE SPECIFIED		size A3	Scale 2.5
Eng LENOIR 2002/11/19		ANGULAR	LINEAR		
Chr LEGARE 2002/11/19		0.X ±0.1	0.XX ±0.1	ECN LS06-0097	
Appr LEGARE 2002/11/19		0.XX' ±2'	0.XXX ±0.1	Spec ref -	
Product family METRAL		Title METRAL FEMALE 4 ROWS 4 MO			
RIGHT ANGLE STB SPECIF 400		catalog no		C-8626-11192	
Customer sheet 1 of 1		Rev. E		E	

Copyright FCI.