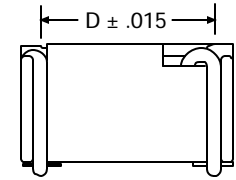
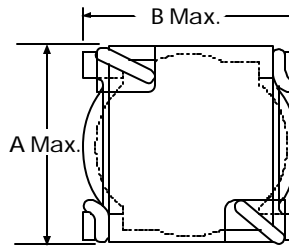
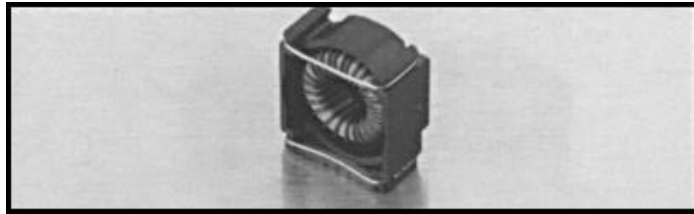
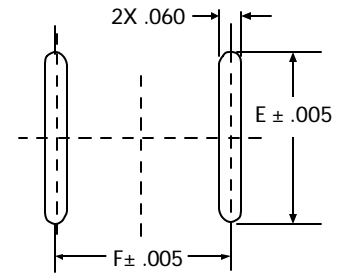
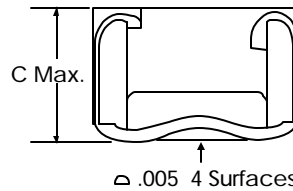


TL2 Surface Mount Toroids



GENERAL CHARACTERISTICS

- Suited for IR and vapor reflow solder process
- Rated up to 130°C operating temperature (ambient plus temperature rise)
- Packaging in Bulk or Tape and Reel
- Custom designs available upon request



ELECTRICAL SPECIFICATIONS					
PART NUMBER	L @ 0 Adc μ H (tolerance \pm 20%)	Idc AMPS (Estimated rise of 55 °C for conditions shown)	L W/Idc μ H (Estimated rise of 55 °C for conditions shown)	DC RESISTANCE OHMS MAXIMUM (W)	VERSION
TL2-01	7.00	1.4	6.2	0.070	L1
TL2-02	22.70	1.0	17.6	0.125	L1
TL2-03	35.30	1.4	29.7	0.166	L2
TL2-04	73.00	1.3	58.1	0.290	L3
TL2-05	167.00	0.9	114.0	0.380	L2
TL2-06	292.00	0.9	192.0	0.560	L3
TL2-07	672.00	0.7	383.0	0.862	L3
TL2-08	1134.00	0.7	645.0	1.250	L4
TL2-09	1950.00	0.7	1070.0	1.700	L5
TL2-10	1.10	3.4	1.0	0.011	L1
TL2-11	12.30	2.8	9.4	0.043	L2
TL2-12	21.90	2.7	16.2	0.063	L3
TL2-13	40.50	2.7	29.1	0.085	L4
TL2-14	72.90	2.6	50.0	0.133	L5
TL2-15	5.20	4.8	3.8	0.017	L2
TL2-16	7.50	5.4	5.1	0.018	L3
TL2-17	14.00	5.5	9.0	0.022	L4
TL2-18	25.90	5.1	16.1	0.032	L5
TL2-19	3.80	8.0	2.5	0.008	L3
TL2-20	7.90	7.8	4.9	0.012	L4
TL2-21	16.00	7.2	9.3	0.019	L5

MECHANICAL DATA - LOW-CURRENT INDUCTORS						
PART NUMBER	A max (INCHES)	B max (INCHES)	C max (INCHES)	D (INCHES)	E (INCHES)	F (INCHES)
L1	.340	.340	.270	.260	.300	.270
L2	.435	.440	.360	.350	.400	.360
L3	.560	.565	.360	.450	.520	.460
L4	.590	.615	.390	.500	.550	.510
L5	.670	.700	.390	.580	.620	.590