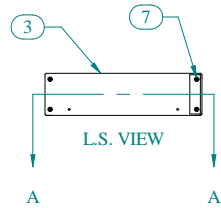
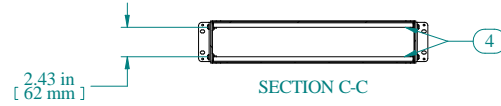


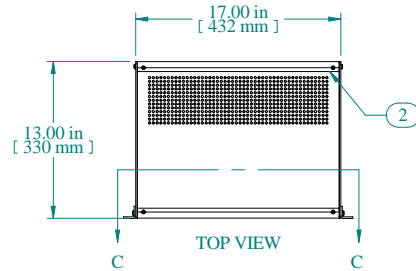
SECTION A-A



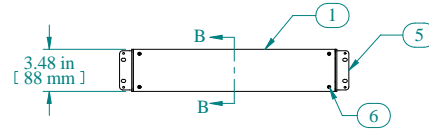
L.S. VIEW



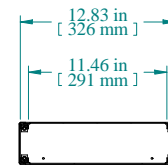
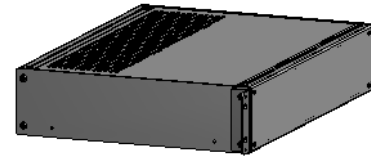
SECTION C-C



TOP VIEW



FRONT VIEW

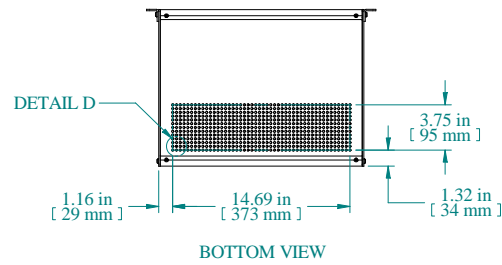
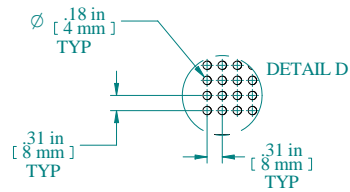


SECTION B-B

Item Number	Title	Quantity
1	RMC - FRONT/REAR PANEL	2
2	RMC - VENTED TOP/BOTTOM PANEL	2
3	RMC - SIDE PANEL	2
4	RMC - INTERNAL BRACKET	4
5	RMC - BRACKET	2
6	SCREW 6-32 X 3/8"	16
7	SCREW 10-32 X 5/8"	8

PART NUMBERS	
RMCV190313BK1	PAINTED BLACK TEXTURED

NOTES
Shipped knockdown for handling ease & protection.



BOTTOM VIEW

Data subject to change without notice. Isometric drawing not to scale.

**HAMMOND
MANUFACTURING™**

www.hammondmfg.com

PART NO. RMCV190313