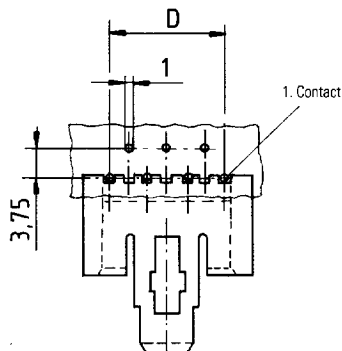
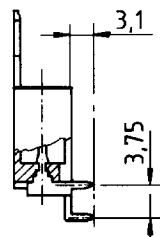
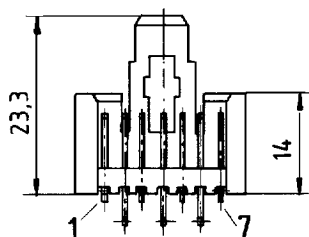
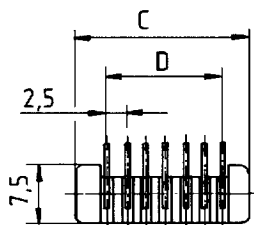
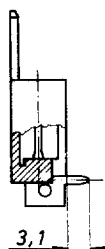
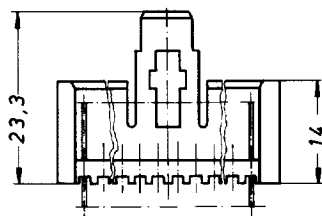
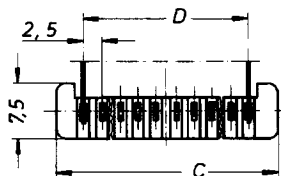




UL-recognized component, E 96569

Serie MKS 2620, Lötstifte In-line, Rastlasche oben

Series MKS 2620, solder pins in line, snap-in locking device on top



Polzahl Positions	Artikel-Nummer Part number	Abmessungen C Dimensions C	Abmessungen D Dimensions D
2	MKS 2621 - 6 - 0 - 202	9,7	2,5
2*	MKS 2622 - 6 - 0 - 202	7,9	2,5
3	MKS 2623 - 6 - 0 - 303	12,2	5,0
4	MKS 2624 - 6 - 0 - 404	14,7	7,5
5	MKS 2625 - 6 - 0 - 505	17,2	10,0
6	MKS 2626 - 6 - 0 - 606	19,7	12,5
7	MKS 2627 - 6 - 0 - 707	22,2	15,0
8	MKS 2628 - 6 - 0 - 808	24,7	17,5
9	MKS 2629 - 6 - 0 - 909	27,2	20,0
10	MKS 2630 - 6 - 0 - 1010	29,7	22,5
11	MKS 2631 - 6 - 0 - 1111	32,2	25,0
12	MKS 2632 - 6 - 0 - 1212	34,7	27,5
13	MKS 2833 - 6 - 0 - 1313	37,2	30,0
14	MKS 2634 - 6 - 0 - 1414	39,7	32,5
15	MKS 2635 - 6 - 0 - 1515	42,2	35,0
16	MKS 2636 - 6 - 0 - 1616	44,7	37,5
17	MKS 2637 - 6 - 0 - 1717	47,2	40,0
18	MKS 2638 - 6 - 0 - 1818	49,7	42,5
20	MKS 2640 - 6 - 0 - 2020	54,7	47,5

Serie MKS 2970, Lötstifte versetzt, Rastlasche oben

Series MKS 2970, solder pins staggered, snap-in locking device on top

Polzahl Positions	Artikel-Nummer Part number	Abmessungen C Dimensions C	Abmessungen D Dimensions D
2	MKS 2971 - 6 - 0 - 202	9,7	2,5
2*	MKS 2972 - 6 - 0 - 202	7,9	2,5
3	MKS 2973 - 6 - 0 - 303	12,2	5,0
4	MKS 2974 - 6 - 0 - 404	14,7	7,5
5	MKS 2975 - 6 - 0 - 505	17,2	10,0
6	MKS 2976 - 6 - 0 - 606	19,7	12,5
7	MKS 2977 - 6 - 0 - 707	22,2	15,0
8	MKS 2978 - 6 - 0 - 808	24,7	17,5
9	MKS 2979 - 6 - 0 - 909	27,2	20,0
10	MKS 2980 - 6 - 0 - 1010	29,7	22,5
11	MKS 2981 - 6 - 0 - 1111	32,2	25,0
12	MKS 2982 - 6 - 0 - 1212	34,7	27,5
13	MKS 2983 - 6 - 0 - 1313	37,2	30,0
14	MKS 2984 - 6 - 0 - 1414	39,7	32,5
15	MKS 2985 - 6 - 0 - 1515	42,2	35,0
16	MKS 2986 - 6 - 0 - 1616	44,7	37,5
17	MKS 2987 - 6 - 0 - 1717	47,2	40,0
18	MKS 2988 - 6 - 0 - 1818	49,7	42,5
20	MKS 2990 - 6 - 0 - 2020	54,7	47,5

* nur geeignet für Federleisten MKF 13216/13316 und MKH 5132
* only suitable for connectors MKF 13216/13316 and MKH 5132

Bauteilseite
Component side