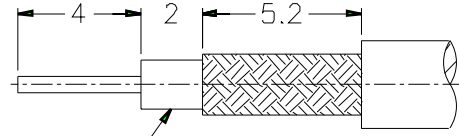


1 2 3 4 5 6 7 8

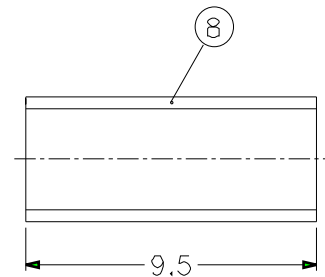
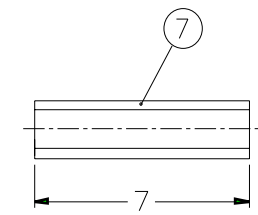
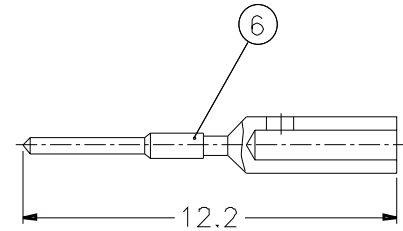
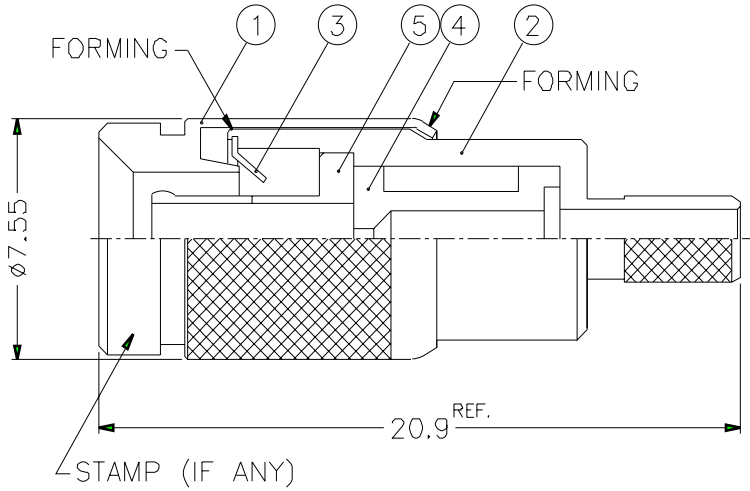
REVISIONS		
ISS	ZONE	DESCRIPTION\PER REQUEST\DATE



REMOVE FOIL 1mm MIN.

RECOMMENDED
CABLE STRIPPING DIM'S

CABLES: -RG-179/U, 187A/U
 -L45466-D12-C66
 -RA-8000
 -GORE AND 3M CABLE
 *SLEEVE ONLY FOR L45466-D12-C66



- 1. CRIMPED FERRULE
HEX CRIMP SIZE .128"
- 2. CRIMPED CONTACT PIN
615717 (M22520/2-01) OR AFM8 ADJUST TO 6
(CABLE RG-179/U, 187A/U ADJUST TO 3)
(CABLE RA-8000 ADJUST TO 1)

NO.	DESCRIPTION	MATERIAL	FINISH	Q'TY	DRAWING NO.	SCALE	4/1	ISSUE	A1	FILE NO.
8	FERRULE	COPPER	NICKEL	1	FR-39/32X95	DIMENSIONS ARE IN MILLIMETERS				PART NO. 1231121D1-E06
7	SLEEVE	PTFE	NATURAL	1	SL00AAC03A	UNLESS OTHERWISE SPECIFIED TOLERANCES				APPROVED DATE 03-26-02'
6	CONTACT PIN	BRASS	GOLD	1	CP10AAH01A	0.5-6 = ±0.2				CHECKED DATE 03-26-02'
5	OUT CONTACT	BECU	GOLD	1	1231121D1-6-B	6-30 = ±0.4				DRAWN JOYCE DATE 03-26-02'
4	INSULATOR	PTFE	NATURAL	1	NS00AHQ01A	30-120 = ±0.6				FILE NO. F:\ND\10\1121\ERB\19\7F\MN
3	SPRING	BECU	NATURAL	1	123-PLUG-SPR	120-315 = ±1				
2	BODY	BRASS	NICKEL	1	BD00ABD02A	315-1000 = ±1.6				
1	SHELL	BRASS	NICKEL	1	SH10AAC01A	1000-2000 = ±2.4				

Amphenol RF

TITLE 1.0/2.3 PUSH-PULL CRIMP PLUG

DRAWING NO. 101121ERB19MN7F

ITEM NO. 101121ERB19MN7F

1 2 3 4 5 6 7 8

F
E
D
C
B
A

F
E
D
C
B
A