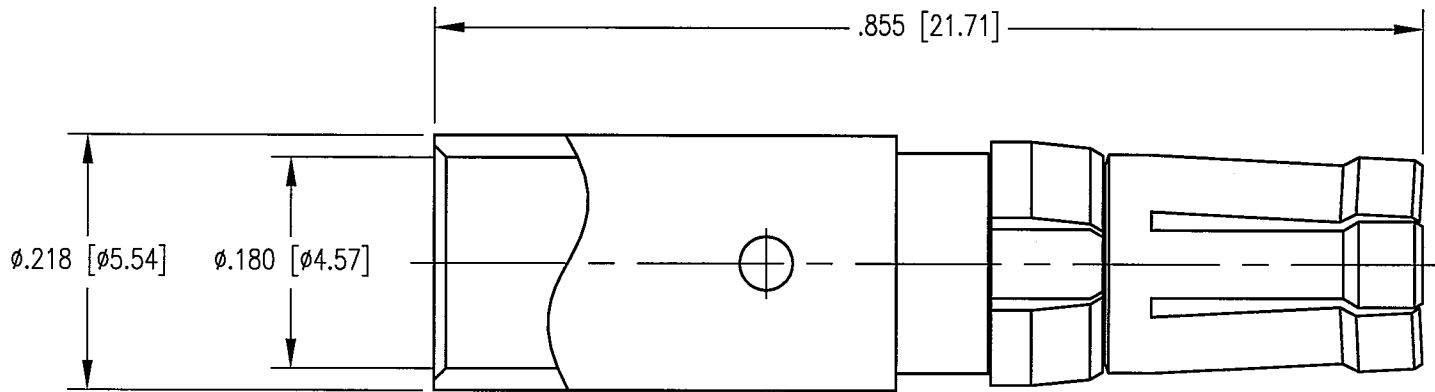


| | | | |
|------------------------|-------------|----------------|------|
| DWG. NO. 221-910-0000G | | | |
| REV | DESCRIPTION | BY DATE | APPD |
| A | ECR 7437 | JWH 8/19/00 | JMC |



NOTES:

- MATERIALS:
BODY: COPPER ALLOY
CLIP RING: BERYLLIUM COPPER PER ASTM B194
- FINISH:
BODY: .000030 MIN. GOLD PER MIL-G-45204 OVER
.000050 MIN. NICKEL PER QQ-N-290
CLIP RING: .000100 MIN. NICKEL PER QQ-N-290
OVER COPPER FLASH

| | | | |
|--|-----------------|---|--------------------|
| PER ASME Y14.5M-1994 UNLESS OTHERWISE SPECIFIED: DIMENSIONS ARE IN INCHES [MM] | | NORTHROP GRUMMAN | |
| TOLERANCES: DECIMALS .XX ± .01 [0.254] .XXX ± .005 [0.127] ANGLES ± 2° | | Winchester Electronics 400 Park Road Watertown, CT 06795 | |
| CUSTOMER DRAWING | | TITLE HIGH POWER PLUG FOR 8 AWG | |
| DRAWN KJT | DATE 8/15/00 | CHECKED JWH | DATE 8/15/00 |
| APPROVED JMC | DATE 8/15/00 | APPROVED JED | DATE 8/15/00 |
| A | | 221-910-0000G | SHT. 1 OF 1 REV. A |