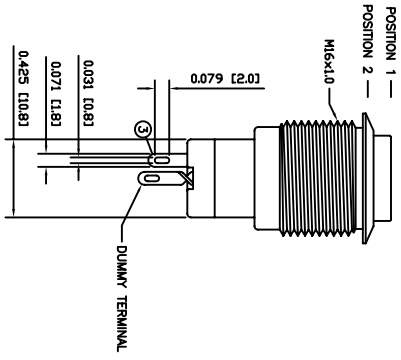
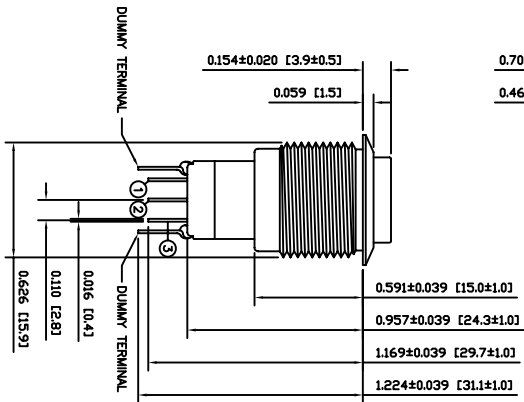
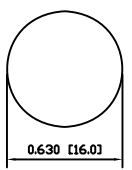


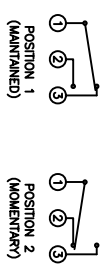
0.709 [18.0]
0.465 [11.8]



SUGGESTED PANEL CUTOUT



SCHEMATIC



SPECIFICATIONS

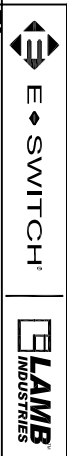
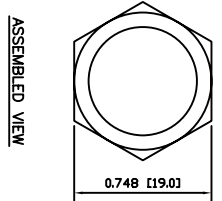
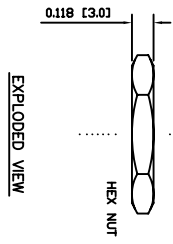
FUNCTION: 1P2T ON-(ON)
RATING: 2A 48VAC
CONTACT RESISTANCE: Initial: 50mΩ Max. at 1A 12VDC
INSULATION RESISTANCE: 1,000MΩ Min. at 500VDC
DIELECTRIC STRENGTH: 2,000VAC Min. for 1 Minute
ELECTRICAL LIFE: 50,000 Cycles
MECHANICAL LIFE: 200,000 Cycles
TEMPERATURE: Operating: -20°C to 55°C
INGRESS PROTECTION: IP65
APPROVALS: **ROHS COMPLIANT**

MATERIALS

BUSHING: Aluminum
BASE: Polycarbonate (PC)
Polybutylene Terephthalate (PBT)
ACTUATOR: Aluminum
Polycarbonate (PC)
HARDWARE: Nickel Plated Brass (#59)
SEALING: Silicone Rubber
INNER ASSEMBLY: Polycarbonate (PC)
Phosphor Bronze
SPRING: Spring Steel
CONTACTS: Silver/Cadmium Oxide (AgCdO)
TERMINALS: Silver Plated Brass (#62)
O-RINGS: Silicone Rubber

COLORS AND FINISH

BEZEL: Black
Anodized Finish
ACTUATOR: Blue
Anodized Finish
ILLUMINATION: None
MARKING: None



PV3SWH2B017

REV.	DATE	BY	CHK
A	10/03/24	CAB	
A	06/13/12	CAB	
B	09/10/16	CAB	
B	09/09/28	CAB	

THE INFORMATION CONTAINED IN THIS DOCUMENT IS PROPRIETARY TO E-SWITCH AND IS NOT TO BE COPIED OR TRANSMITTED

NEW RELEASE DESCRIPTION

20208 06/13/12
PCB DATE DRAWN BY

INCHES [MILLIMETERS]
GENERAL TOLERANCES ±0.008 [±0.2] / ±1'
SCALE DRAWING NOT TO SCALE
PROJECTION THIRD ANGLE

DATE AUG 13, 2012
REVISION A