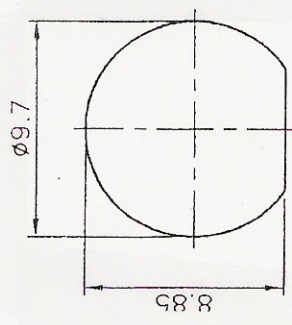
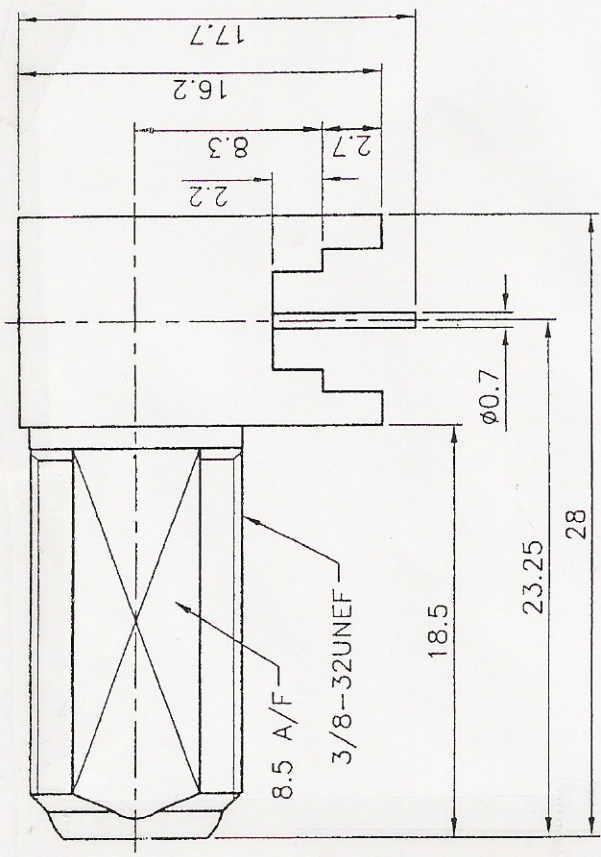
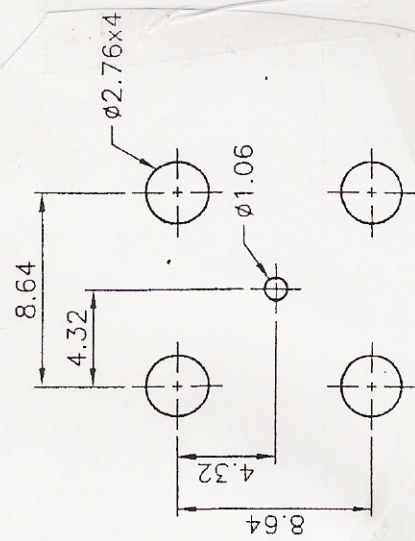


Rev	Description	Date	Appr
-	RELEASED	8/17/04	



RECOMMENDED MOUNTING HOLE



P.C.B. LAYOUT

**SPECIFICATIONS:**

- Material: Polypropylene
- Insulator: Polypropylene
- Contact: Brass, Tin plated
- Body: Brass.
- Hex Nut: Brass, Nickel Plated
- Electrical:
- Nominal Impedance: 50ohms
- Frequency range: 0-3 GHz
- Maximum peak voltage: 500V
- Insulation resistance: 5000 Mohm min @ 500 VDC
- Dielectric withstanding voltage: 1500 VAC rms
- Temp range: -40°C to +140°C

# ADAM TECH

**DESCRIPTION:**  
RF CONNECTOR, TYPE F, RIGHT ANGLE

Dimension in IN [MM]		DRAWN : SS	
Tolerance (Unless Otherwise Specified)		APPR : -	
.XX ± .01		SHEET 1	
.XXX ± .005		LOG	
Date: 8/17/04	SCALE: NTS	OF 1 SHEETS	REV. .

**PART NUMBER:**  
RF4-18-P-00-50