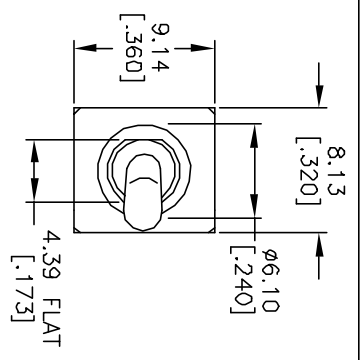
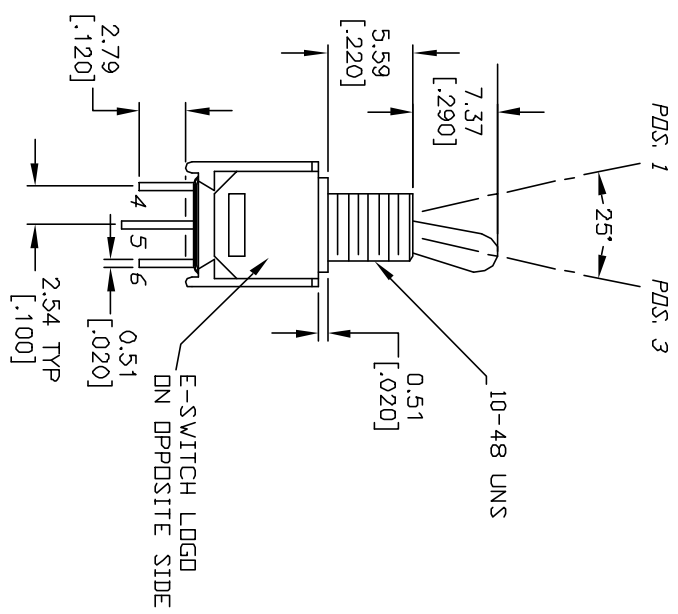
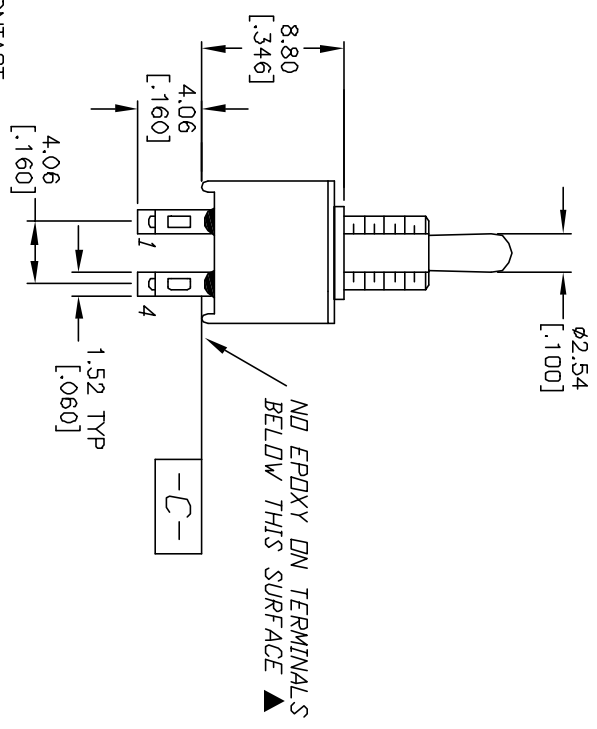


**CONTACT CONFIGURATION**

SWITCH FUNCTION		
PDS. 1	PDS. 2	PDS. 3
DN	NONE	DN
2-3-5-6	DPEN	2-1-5-4

**NOTES:**

1. ALL DIMENSIONS IN MM [INCH]
2. GENERAL TOLERANCE: X.X=±0.4  
X.XX=±0.25
3. TERM. NOS. FOR REF. ONLY
4. RATING: 3A @ 120 VAC OR 28 VDC  
1A @ 250 VAC
5. MATERIAL: FIXED TERMINAL & MOVING CONTACT  
COPPER ALLOY W/ SILVER PLATE
6. CONTACT RESISTANCE: 20 MΩ MAX INITIAL  
@2-4VDC, 100mA for AG & AU  
cycles at full load.
7. ELECTRICAL LIFE: 30,000 make-and-break  
cycles at full load.
8. INSULATION RESISTANCE: 1,000MΩ MIN.
9. DIELECTRIC STRENGTH: 1000V RMS @sea level
10. OPERATING TEMP.: -40°C to 85°C



**E-SWITCH®**

REV.	ECN No.	DESCRIPTION	DATE	CHKD	TITLE	SCALE	DATE	DR	DWG	REV
A	11731	RELEASED FOR PRODUCTION	10/12/01	CJC	200 MDP1 T3 B1 M1 Q E	2:1	10/12/01	CJB	T221033	A
<p>THE INFORMATION CONTAINED IN THIS DOCUMENT IS PROPRIETARY TO E-SWITCH AND IS NOT TO BE COPIED OR TRANSFERRED</p>										