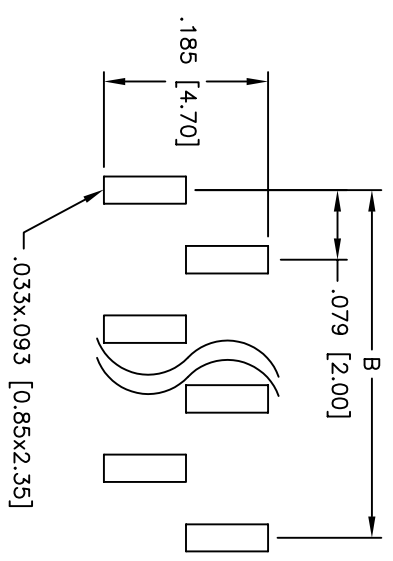
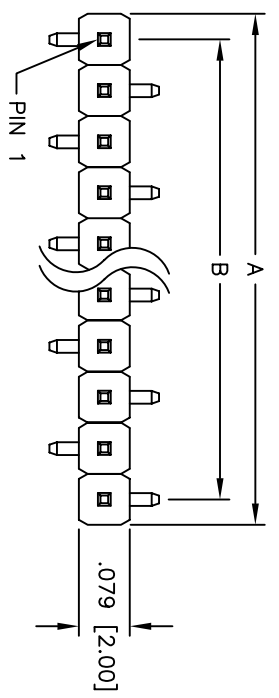
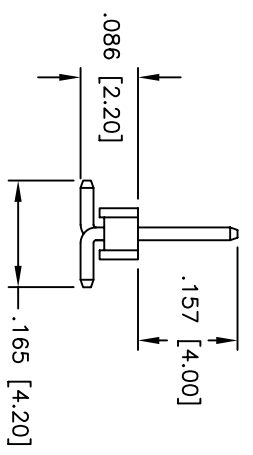
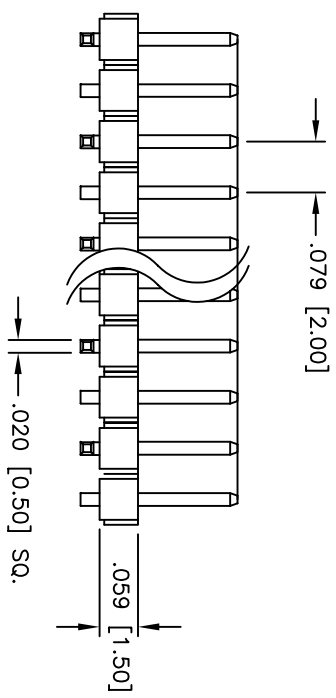


Rev	AWO #	Description	Date	Appr
-		RELEASED	4/1/05	

APPROVED: \_\_\_\_\_  
 DATE: \_\_\_\_\_ TITLE: \_\_\_\_\_



RECOMMENDED  
PCB LAYOUT



**SPECIFICATIONS:**

**Material:**  
 Insulator: Nylon 6T, rated UL 94V-0  
 Insulator color: Black  
**Contacts:** Brass  
**Plating:**  
 Tin over Copper underplate overall  
**Electrical:**  
 Operating voltage: 250 VAC max  
 Current rating: 1 Amp max  
 Contact resistance: 20 mohms max  
 Insulation resistance: 5,000 Mohms min @ 500 VDC  
 Dielectric withstanding voltage: 1,000 VAC for 1 minute  
**Temperature Rating:**  
 Operating temperature: -55°C to +105°C  
**Environmental:**  
 Lead free, RoHS compliant  
 Recommended soldering temp: 260°C for 5 seconds

**Positions:** 1 thru 40  
 A = .079 [2.00] x No. of Positions  
 B = .079 [2.00] x No. of Spaces

UNLESS OTHERWISE SPECIFIED  
 ALL DIMENSIONS ARE IN INCHES [MM]  
 TOLERANCES: EXCEPT AS NOTED

INCHES	HOLES
.X ± .10	ØX ± .10
.XX ± .020	ØXXX ± .015
.XXX ± .015	ØXXX ± .010

APPROVALS

DRAWN	SS	DATE	4/1/05
CHECKED			
APPROVED			

**ADAM TECH**

909 Rahway Avenue, Union, NJ 07083  
 Phone: 908-687-5000 Fax: 908-687-5710

TITLE  
**.079 [2.00] SINGLE ROW PIN HEADER  
 SURFACE MOUNT, TYPE A, TIN PLATED**

SIZE	PART NO.	REV.
X	2PH1-XX-TA-SMT-B	-
REF:	SCALE: NTS	SHEET 1 OF 1