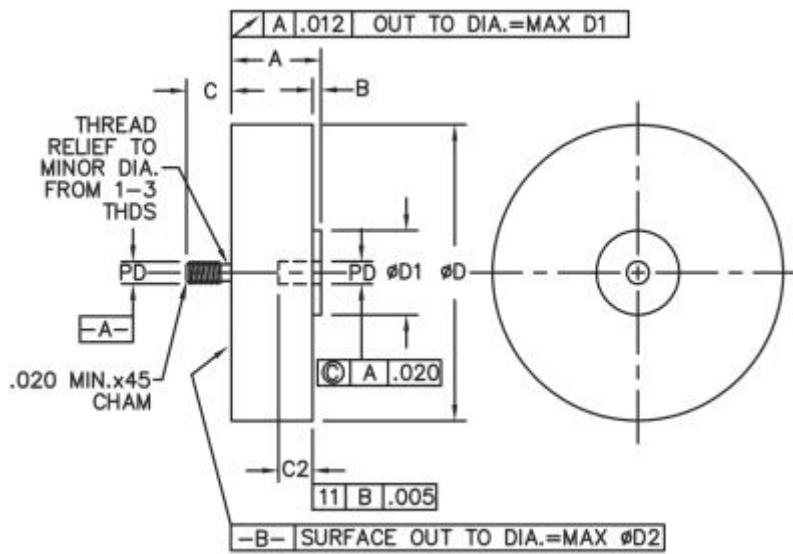


High Voltage Stacks – HD SERIES AND DISK TYPES

1N5597, 1N5600 & 1N5603

DISK TYPE



1N5597 & 1N5600

Dim. Inches	Millimeter		Notes
	Minimum	Maximum	
A	.73	.83	18.54 21.08 8
B	---	.080	---
C	.240	.264	6.10 6.71 2,6
C1	.265	.400	6.73 10.16 4
ØD	1.85	1.95	46.99 49.53
ØD1	.57	.67	14.48 17.02

1N5603

Dim. Inches	Millimeter		Notes
	Minimum	Maximum	
A	.970	1.020	24.64 25.91 8
B	.050	0.80	1.27 2.03
C	.307	7.80	.317 8.05 3
C1	.318	.400	8.08 10.16 5,7
ØD	3.450	3.650	87.63 92.81
ØD1	.95	1.250	24.13 31.75

Notes:

- All Marking shall be on cathode side of module.
- Threaded stud 1/4-28UNF-2A.
- Threaded stud 3/8-UNF-2A.
- Threaded insert 1/4-28UNF-2B.
- Threaded insert 3/8-24UNF-2B.
- Cathode connected to terminal 2.
- Cathode connected to terminal 1.
- Module contour within dimension A is not specified.

AMERICAN MICROSEMICONDUCTOR Catalog Number	Working Peak Reverse Voltage	DC Output Current
1N5597	10kV	1A
1N5600	5kV	2A
1N5603	5kV	5A

Electrical Characteristics

		1N5597	1N5600	1N5603
Maximum DC output current-T _c = 75°C	I _o	1A	2A	5A
Maximum surge current-T _c = 75°C	I _{FSM}	30A	80A	200A
Max peak reverse voltage	I _{RM}	10Kv	5kV	5kV
Min peak forward voltage @ 25°C	V _{FM}	13V @ 1A*	6V @ 2A*	6V @ 5A*
Max peak forward voltage @ 25°C	V _{FM}	19V @ 1A*	10V @ 2A*	10V @ 5A*
Max peak reverse current @ 25°C, at V _{rrm}	I _{RM}	1 uA	5 uA	5 uA
Max peak reverse current @ 100°C, at V _{rrm}	I _{RM}	75 uA	100 uA	100 uA
Max capacitance @ 100V	C _J	30 pF	30 pF	40 Pf



1N5597, 1N5600, 1N5603

Figure 1
 Typical Forward Voltage vs. Forward Current

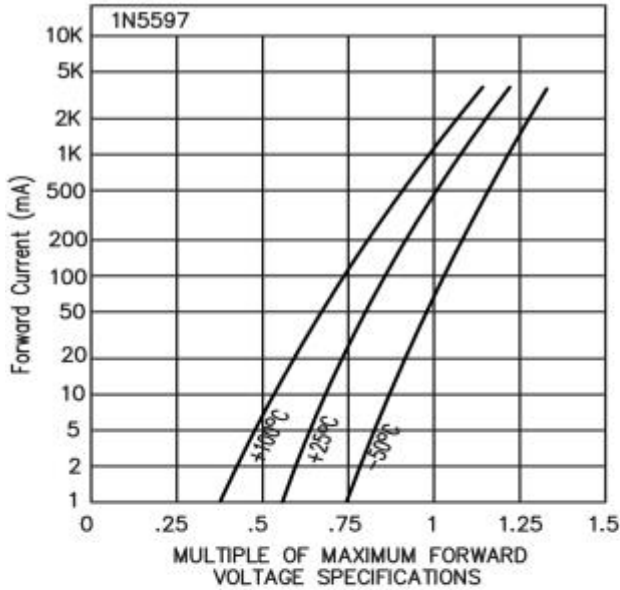


Figure 3
 Typical Forward Voltage vs. Forward Current

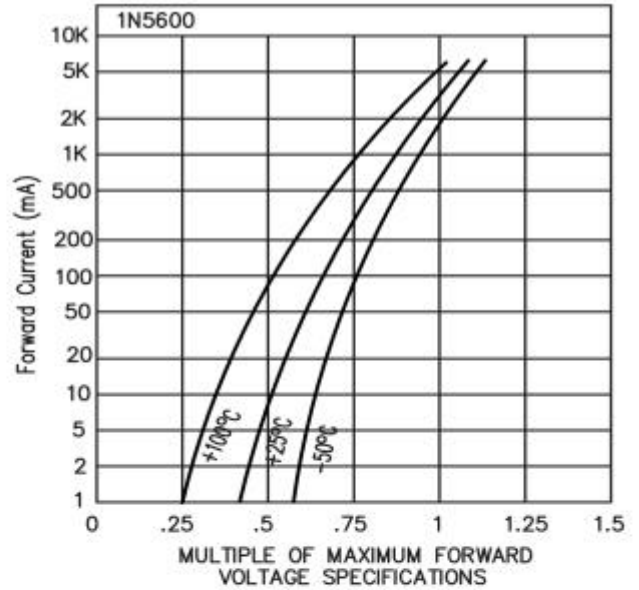


Figure 2
 Typical Forward Voltage vs. Forward Current

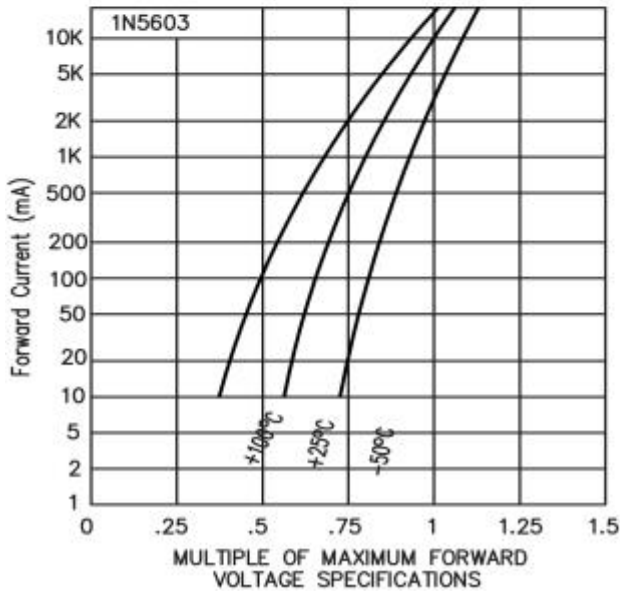
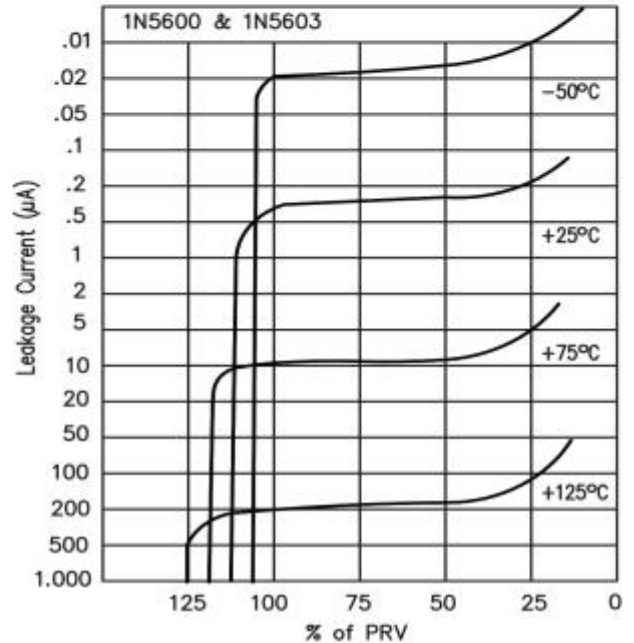
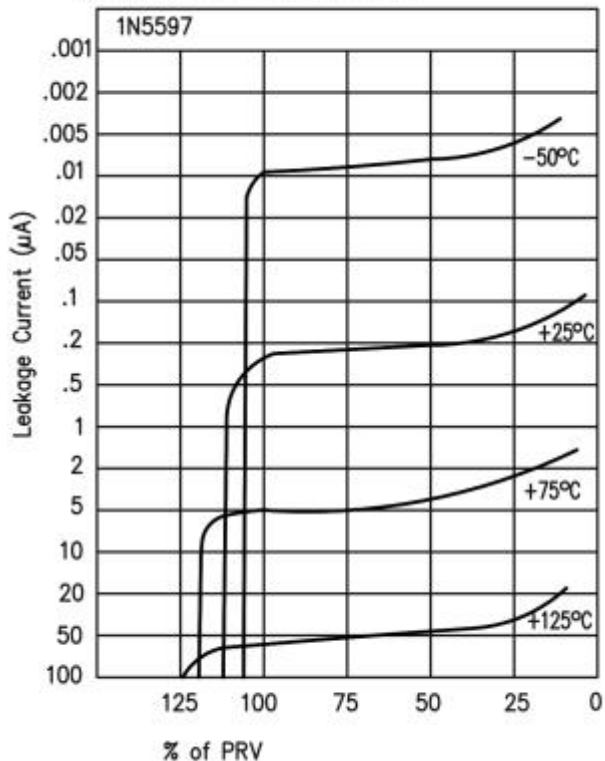


Figure 4
 Typical Leakage Current vs. PRV

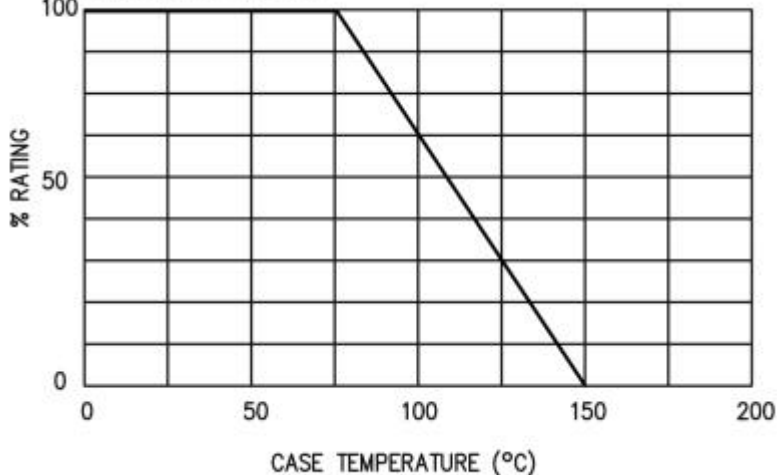


1N5597, 1N5600, 1N5603

Typical Leakage Current vs. PRV



Current Derating Curve



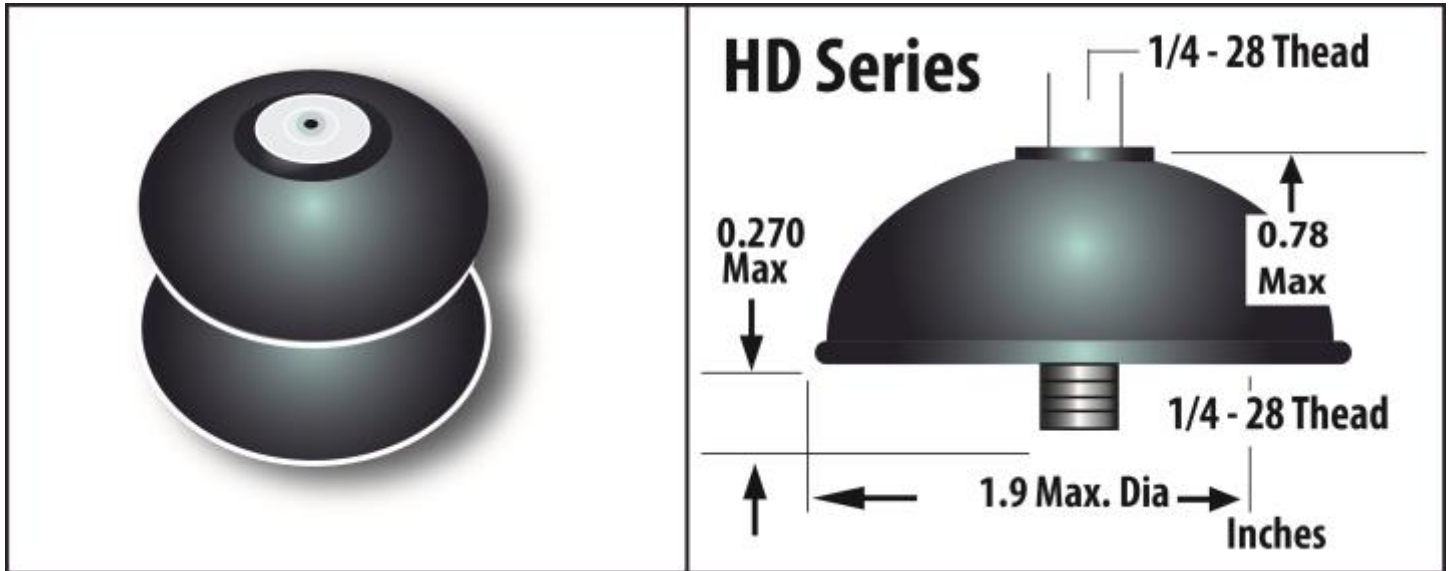
HD TYPE



DISK TYPE



1N5597, 1N5600, 1N5603



BOTH HD SERIES AND DISK TYPE SERIES AVAILABLE IN METRIC THREADS