



### Features

- Frequency Range: 20~600MHz
- P-1: 20dBm(typ)
- Low Noise: 0.8dB(Typ)
- Active Bias Design Supply Temperature Compensation
- Standard Hermetic Package
- Operating Temperature Range: -55°C~+85°C

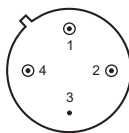
### Electrical (50 Ω, V<sub>CC</sub>=+5V, T<sub>A</sub>=-55°C~+85°C)

Parameter	Symbol	Unit	Guaranteed	Typical
Frequency Range	f <sub>L</sub> ~f <sub>H</sub>	MHz	20~600	20~600
Gain	G <sub>p</sub>	dB	≥21	23
Gain Flatness	ΔG <sub>p</sub>	dB	≤1.0	0.6
Noise Figure	F <sub>n</sub>	dB	≤1.5 Δ	0.8
Input VSWR	VSWR <sub>i</sub>	--	≤2.0:1 Δ	1.5:1
Output VSWR	VSWR <sub>o</sub>	--	≤2.0:1 Δ	1.6:1
For 1dB Compression	P <sub>-1</sub>	dBm	≥19.0*Δ	20.0
Supply Current	I <sub>CC</sub>	mA	≤100	80

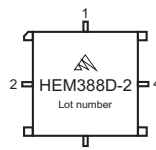
Note: “\*” f=300 MHz. “Δ” T<sub>A</sub>=24±1°C.

### Maximum Ratings

- Power supply: +6V<sub>DC</sub>  
 RF input: +13dBm  
 Storage Temp: +125°C



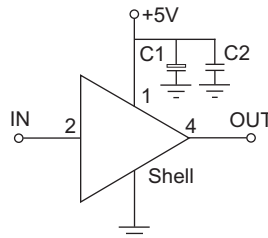
TO-8C



SMO-8C

### Application Notes

1. Interface schematic shown as right, C<sub>1</sub>=3.3~22 μF, C<sub>2</sub>=3300~6800pF.
2. ESD observe handling precautions.
3. Connectorized package (SMA-1) available.
4. See assembly section for outline and mounting information.



### Typical Curves

