

6

5

4

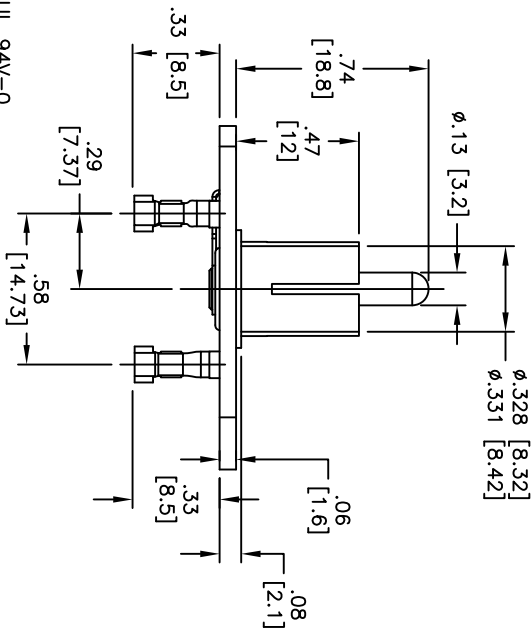
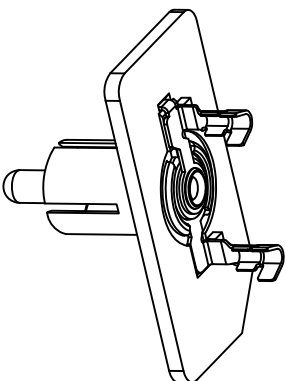
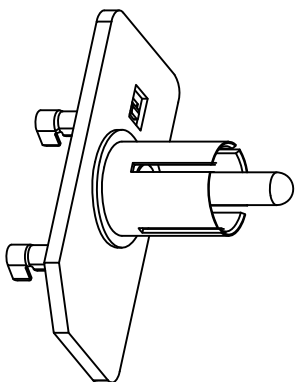
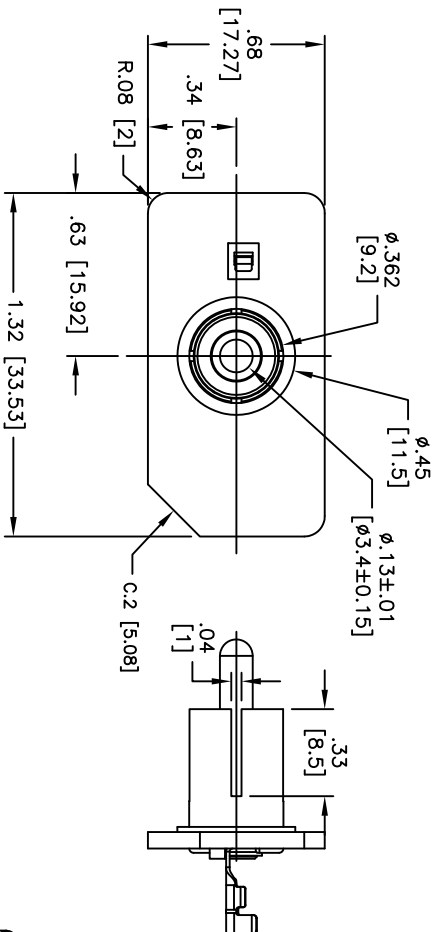
3

2

1

APPROVED: _____ TITLE: _____
DATE: _____

Rev	AWO #	Description	Date	Appr
1	10205	PRELIMINARY DESIGN	01/05/11	
-	10205	RELEASED FOR PRODUCTION	01/17/11	
A	10205	ADDED RING I.D.	01/18/11	
B	10205	REDRAWN	03/07/11	



SPECIFICATIONS:

- Material: Insulator: PA9T, rated UL 94V-0
- Insulator color: Black
- Center Pin: Brass, Nickel plated
- Contacts: Brass
- Plating: Tin over Copper underplate
- Electrical: Operating voltage: 50 VDC max. Current rating: 1 Amps max. Contact resistance: 30 mohms max. Insulation resistance: 100 Mohms min. @ DC 250V Dielectric withstanding voltage: 500 VAC for 1 minute
- Environmental: Lead free, RoHS compliant
- Recommended soldering temp: 260°C for 5 sec.

ADAM TECH

909 Rahway Avenue, Union, NJ 07083
Phone: 908-687-5000 Fax: 908-687-5710

RCA PLUG

UNLESS OTHERWISE SPECIFIED ALL DIMENSIONS ARE INCHES [MM] TOLERANCES: EXCEPT AS NOTED		INCHES		HOLDS	
.X	± .10	ØX	± .10		
.XX	± .020	ØXXX	± .015		
.XXX	± .015	ØXXXX	± .010		
APPROVALS	DATE	TITLE			
DRAWN	DY	RCA PLUG			
CHECKED		SIZE	PART NO.	REV.	
APPROVED		X	RCP-22-W-1-C5	B	
		REF:	S0002C	SCALE:	NTS
				SHEET	1 OF 1

6

5

4

3

2

1