

Power Detectors

Applications

- RF Power Monitor
- Output Load Return Loss

Features

- Military Grade
- 2.4 – 6.0 GHz
- Low Insertion Loss
- Low VSWR
- -40C to +85C Operation
- 100 Watts
- 12 Bit Serial Word Outputs (2)
- SMA Female Connectors
- Rugged Aluminum Housing

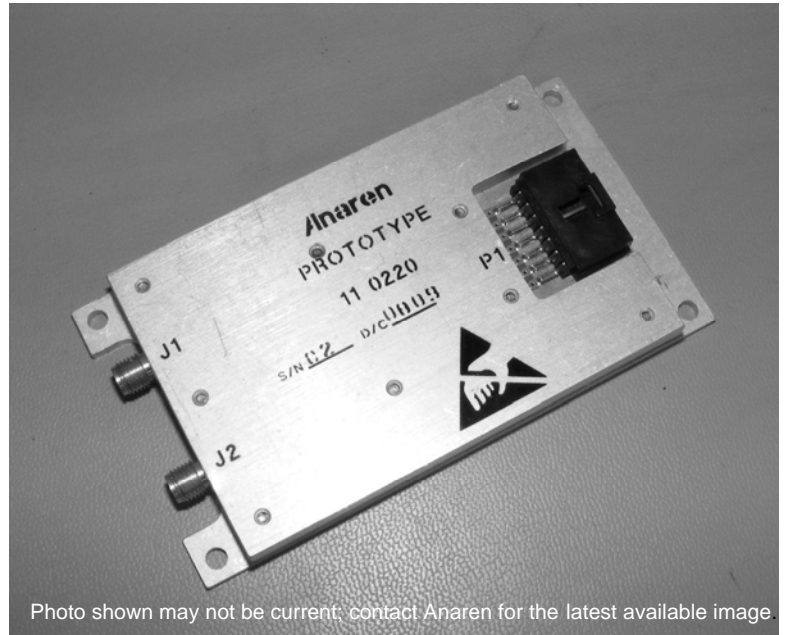
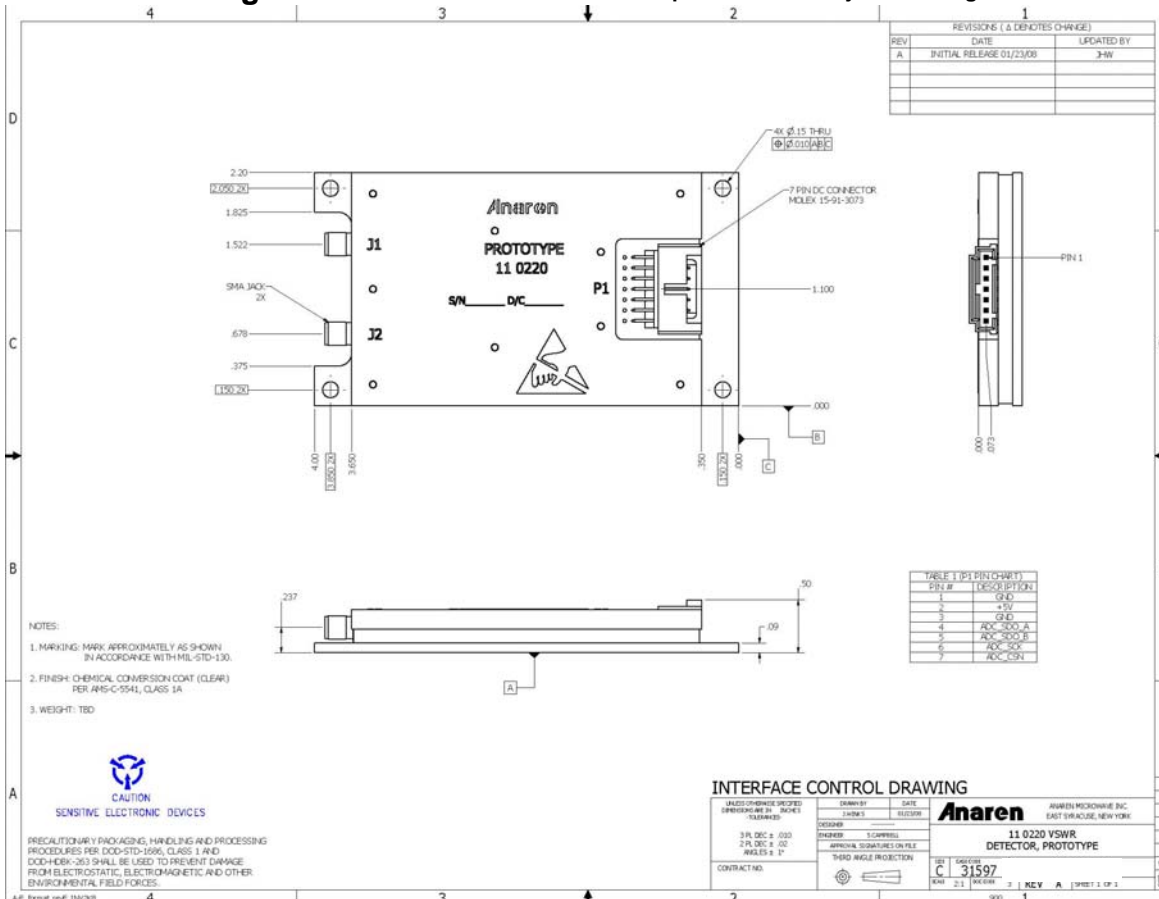


Photo shown may not be current; contact Anaren for the latest available image.

Outline Drawing

NOTES: Electrical and Mechanical Specifications subject to change without notice



Specifications

Parameter	Specification	Comments
Frequency	2400 – 6000 MHz	
Return Loss	20dB min	
Insertion Loss	0.4dB max	
Operational Power	0 to +47 dBm	Forward power detection
	+15 to +47 dBm	VSWR Detection
Power Detection accuracy	±2.5dB	Over all frequencies, temps and units
Coupler Directivity	18dB min.	
Timing	500nS	RF present at J1 to read delay
Power Handling	100W max	Into infinite VSWR load - +85°C baseplate
DC Power Required	+5V @ 75mA max.	
Logic Interface	12 bit serial word for forward and reverse power	User must supply clock and chip select
Operational Temperature	-40°C to +85°C	

* All parameters based on 50 Ohm source and load impedances