

### FEATURES

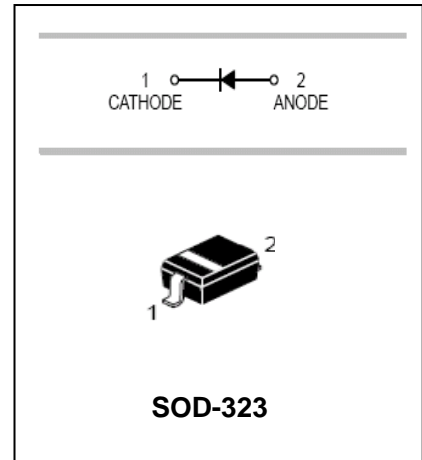
- Low forward voltage drop.
- Guard ring die construction for transient protection.
- Ideal for low logic level applications.
- Low capacitance.



Lead-free

### APPLICATIONS

- Schottky barrier switching



### ORDERING INFORMATION

Type No.	Marking	Package Code
SD107WS	SG	SOD-323

### MAXIMUM RATING @ Ta=25°C unless otherwise specified

Parameter	Symbol	Limits	Unit
Peak Repetitive reverse voltage	$V_{RRM}$	30	V
Working peak reverse voltage	$V_{RWM}$		
DC blocking voltage	$V_R$		
RMS Reverse Voltage	$V_{R(RMS)}$	21	V
Forward continuous Current	$I_F$	100	mA
Non-Repetitive Peak Forward Surge Current @t ≤10ms	$I_{FSM}$	750	mA
Power dissipation	$P_d$	250	mW
Thermal resistance junction to ambient air	$R_{\theta JA}$	500	°C/W
Junction temperature	$T_j$	150	°C
Storage temperature	$T_{STG}$	-65~+150	°C

# Diode Semiconductor Korea

## Silicon Epitaxial Planar Diode

## SD107WS

ELECTRICAL CHARACTERISTICS @ Ta=25°C unless otherwise specified

Parameter	Symbol	Min.	Typ.	Max.	Unit	Conditions
Reverse breakdown voltage	$V_{(BR)R}$	30			V	$I_R=100\mu A$
Forward voltage	$V_F$		300		mV	$I_F=2mA$
			360			$I_F=15mA$
			470	550		$I_F=50mA$
			580	800		$I_F=100mA$
Reverse current	$I_R$			1.0	$\mu A$	$V_R=25V$
Capacitance	$C_T$			7	pF	$V_R=10V, f=1MHz$

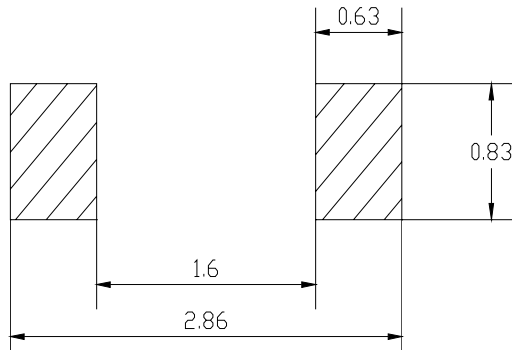
## PACKAGE OUTLINE

Plastic surface mounted package

SOD-323

SOD-323		
Dim	Min	Max
A	1.275	1.325
B	1.675	1.725
C	0.9 Typical	
D	0.25	0.35
E	0.27	0.37
H	0.02	0.1
J	0.1 Typical	
K	2.6	2.7
All Dimensions in mm		

### SOLDERING FOOTPRINT



Unit : mm

### PACKAGE INFORMATION

Device	Package	Shipping
SD107WS	SOD-323	3000/Tape&Reel