

- **Low Phase Noise performance**
- **Ultra-low Acceleration Sensitivity**
- **Frequency Range: 10 - 50 MHz**
- **Output Signal CMOS or Clipped Sinewave**
- **Miniature SMT Package**



DESCRIPTION

T1300 series TCXOs are Ultra-low acceleration sensitivity parts packaged in a miniature SMT package. The part provides stability of $\pm 2 \times 10^{-6}$ ppm over -40° to $+85^{\circ}$ C.

GENERAL SPECIFICATION

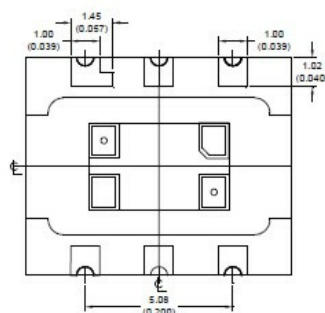
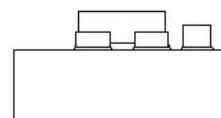
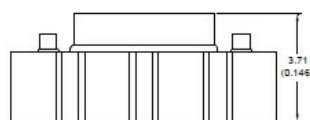
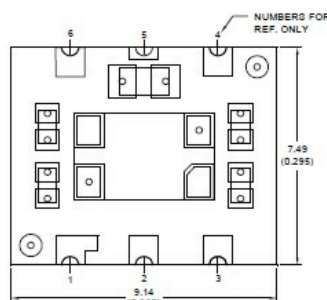
Frequency Range:	10.0MHz to 50.0MHz
Output:	CMOS Squarewave (Option C) or Clipped Sinewave (Option S)
Symmetry:	$50\% \pm 10\%$ CMOS)
Load:	15pF/10k Ω
Temperature Stability:	$\pm 1 \times 10^{-6}$ over -40° to $+85^{\circ}$ C
Frequency vs. Supply V:	$\pm 1 \times 10^{-7}$ for a 5% change
Frequency vs. Load:	$\pm 1 \times 10^{-7}$ for a 10% change
Ageing:	± 0.5 ppm /year after 14 days operation
Input Voltage:	+5.0VDC or +3.3VDC $\pm 5\%$
Input Current:	6mA max.
Warm-up Time:	to within ± 1 ppm in 10ms.
G-Sensitivity:	$< 7 \times 10^{-11}$ /g, total gamma
Frequency Adjust:	± 7.0 ppm typical, positive slope 0 to Vcc EFC, 50k Ω input Z.

Designed and manufactured by Greenray Industries Inc.

PHASE NOISE
(At 10MHz +5V, Typical)

Offset	dBc/Hz
10Hz	-95
100Hz	-123
1kHz	-145
10kHz	-155
100kHz	-157

OUTLINES AND DIMENSIONS



ALL DIMENSIONS ARE IN mm(in)

PART NUMBERING

Example: **T1307-C-3.3V-10.0MHz**

