



MODEL: CBL-UA-P5-1 | **DESCRIPTION:** USB CABLE

FEATURES

- USB 2.0
- type A male to DC plug 2.1 mm center
- 1 meter
- PVC jacket



SPECIFICATIONS

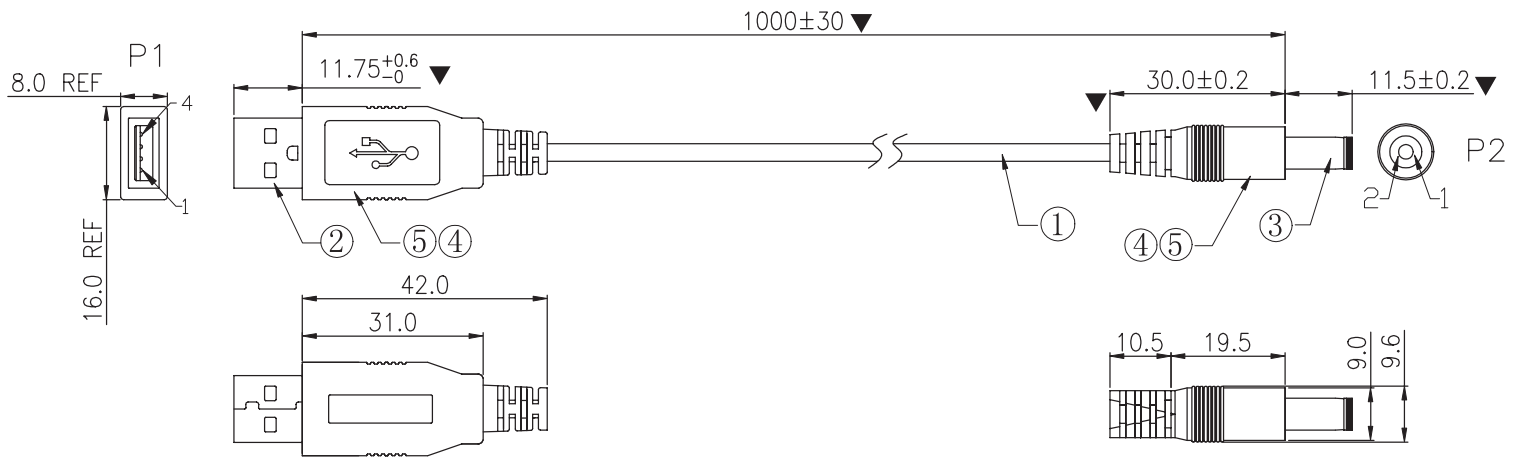
| parameter | conditions/description | min | typ | max | units |
|-----------------------|------------------------|-----|-----|-----|--------------------|
| rated voltage | | | 20 | | Vdc |
| rated current | | | | 2 | A |
| conductor resistance | | | | 3 | Ω |
| insulation resistance | at 300 Vdc / 10 ms | 10 | | | M Ω |
| operating temperature | | -25 | | 85 | $^{\circ}\text{C}$ |
| storage temperature | | -25 | | 80 | $^{\circ}\text{C}$ |
| flammability rating | UL94V-0 | | | | |
| RoHS | yes | | | | |

MECHANICAL DRAWING

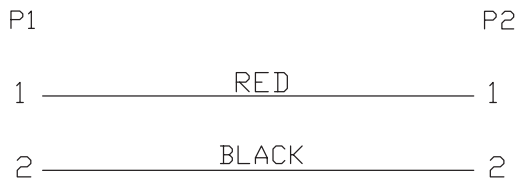
units: mm
 tolerance:
 X.X ±0.2 mm
 X.XX ±0.15 mm
 unless otherwise noted

critical dimension: ▼

| ITEM | DESCRIPTION | MATERIAL | PLATING/COLOR |
|------|-------------|---------------------------|------------------------------------|
| 1 | cable | 24 AWG OD: 3.5 mm, PVC | black |
| 2 | connector 1 | USB 2.0 Type A | shell: nickel term.: gold flash |
| 3 | connector 2 | 5.5 x 2.1 barrel plug | nickel |
| 4 | inner mold | LD-PE | black |
| 5 | over mold | PVC | black |



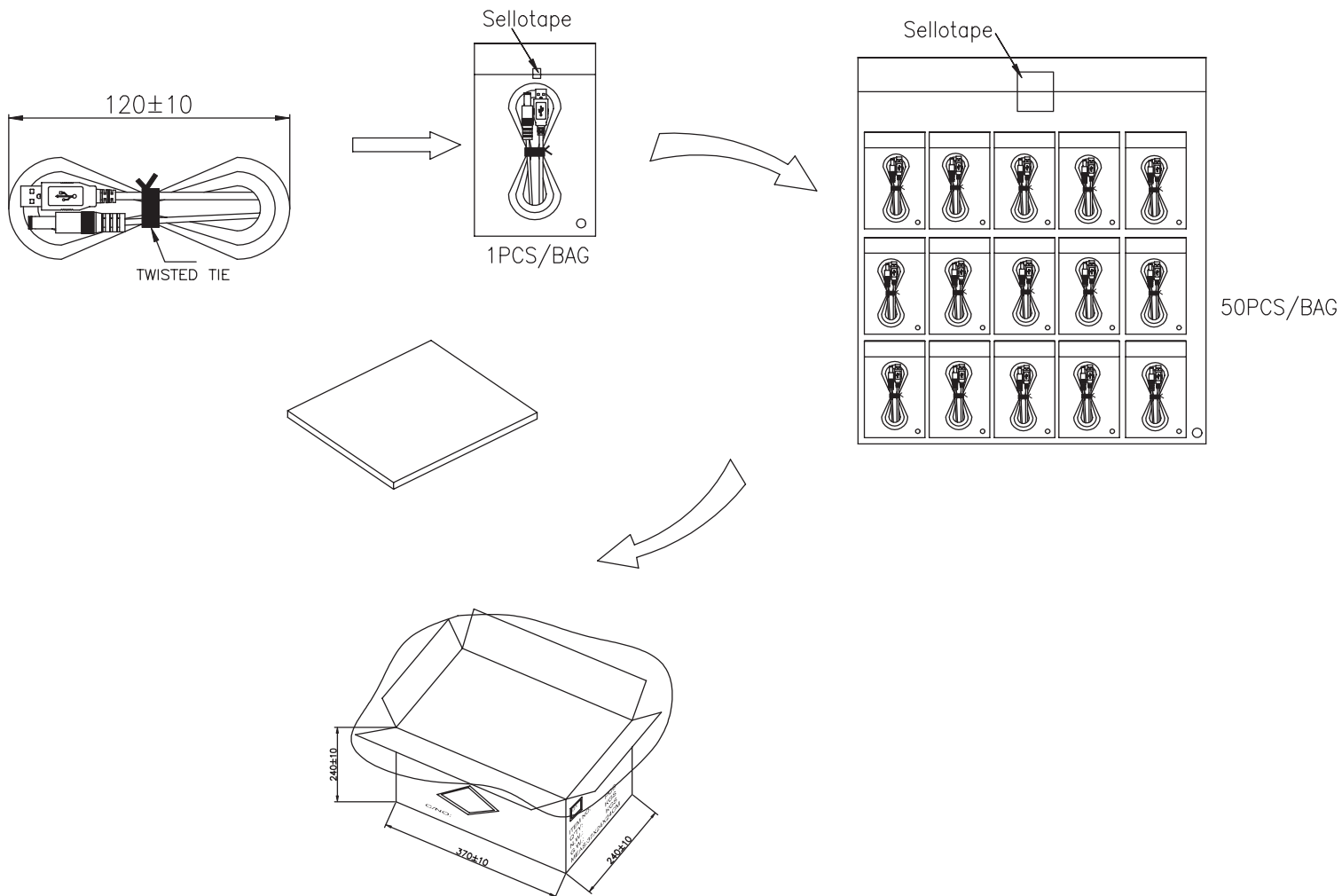
WIRE DIAGRAM



PACKAGING

units: mm

Carton Size: 370 x 240 x 240 mm
Carton QTY: 600 pcs



REVISION HISTORY

| rev. | description | date |
|-------------|--------------------|-------------|
| 1.0 | initial release | 12/10/2018 |

The revision history provided is for informational purposes only and is believed to be accurate.



CUI INC[®]

Headquarters
20050 SW 112th Ave.
Tualatin, OR 97062
800.275.4899

Fax 503.612.2383
cui.com
techsupport@cui.com

CUI offers a one (1) year limited warranty. Complete warranty information is listed on our website.

CUI reserves the right to make changes to the product at any time without notice. Information provided by CUI is believed to be accurate and reliable. However, no responsibility is assumed by CUI for its use, nor for any infringements of patents or other rights of third parties which may result from its use.

CUI products are not authorized or warranted for use as critical components in equipment that requires an extremely high level of reliability. A critical component is any component of a life support device or system whose failure to perform can be reasonably expected to cause the failure of the life support device or system, or to affect its safety or effectiveness.